

BURNING COAL THEATRE COMPANY PRESENTS

# THE NORMAL HEART

BY LARRY  
KRAMER



DIRECTED BY  
EMILY RADII

JANUARY 18 – FEBRUARY 4, 2018

THURSDAYS – SATURDAYS AT 7:30PM , SUNDAYS AT 2PM



# Contents

From "Gay Cancer" to Near Normal: What is HIV/AIDS?	1
Gay Men's Health Crisis	2
The Author	2
Synopsis & History	3
Company Bios	4
References	9
NC Education Standards	10

Please know that everything in The Normal Heart happened. These were and are real people who lives and died, and are presented here as best I could. Several more have died since.

--Larry Kramer

**BURNING  
C O A L  
THEATRE  
COMPANY**  
919.834.4001 BURNINGCOAL.ORG

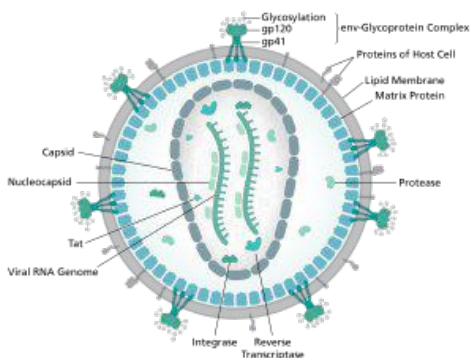


# From "Gay Cancer" to Near Normal: What is HIV/AIDS?

Though HIV (Human Immunodeficiency Virus) and AIDS (Acquired Immune Deficiency Syndrome) are related conditions on a disease spectrum, they are not technically the same thing. HIV is a virus that interferes with the human immune system, thereby increasing the risk of common infections (such as tuberculosis) as well as opportunistic infections and tumors that rarely affect people with working immune systems (such as Kaposi's Sarcoma).

between three and 20+ years (the average being 8 years).

Due to the incurable nature of the disease, and the fact that it first arose in marginalized populations such as the LGBT community, HIV infected persons are often subject to varieties of stigma that, in some places, prevents testing for the disease and procuring treatment. Often, AIDS stigma is expressed in conjunction with other stigmas, such as homophobia. This specific correlation is particularly common in developed countries, yet the dominant mode of HIV spread worldwide is heterosexual sex.



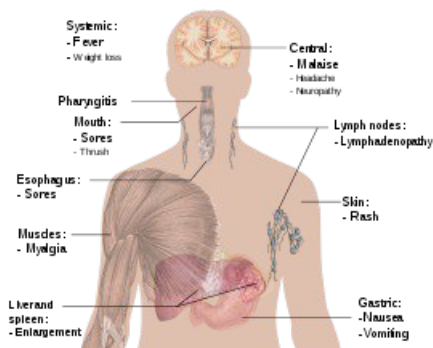
HIV is spread through bodily fluid contact (excluding saliva and tears), and the primary disease vectors are unprotected sex, contaminated blood transfusions, or the use of contaminated hypodermic needles. There is no cure of vaccine, but major steps have been made in the treatment of the disease. Without treatment, the average survival time after infection is roughly 11 years, while improved treatment regimens have allowed for a near normal life expectancy in infected individuals.

individuals will develop AIDS. This is defined as a CD4+T cell (an immune cell used to fight disease) count below 200, or the development of certain specific diseases (such as Kaposi's Sarcoma, Burkitt's Lymphoma, cachexia, or esophageal candidiasis). The destruction of the immune system by the HIV virus leaves the individual open to a host of opportunistic infections that a healthy immune system would readily prevent.

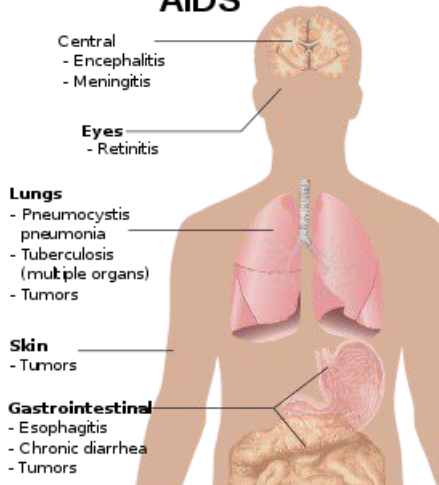


It is commonly believed that the association of AIDS with homosexual lifestyles was one of the chief reasons that, despite the increasing death toll during the disease's first emergence into public consciousness, political and civil authorities did little to support research or prevention of the disease. President Ronald Reagan would not publicly mention the word AIDS until 1985, by which time more than 5,000 people had died of the disease, most of them gay men. It is this indifference to the plight of already marginalized groups that inspired much of the urban art of the 1980's and early 90's, as well as the slogan "Silence = Death."

## Main symptoms of Acute HIV infection



## Main symptoms of AIDS



Upon initial infection, the individual may experience a set of symptoms resembling influenza or mononucleosis for a 2-4 week period. Due to the nonspecificity of the symptoms, they are not often recognized as the signs of an HIV infection. Following this phase, the virus enters a stage called clinical latency, in which no symptoms are shown. This stage can last from anywhere



# GAY MEN'S HEALTH CRISIS

GMHC (Gay Men's Health Crisis) was founded in 1982 after reports that rare forms of cancer were infecting young gay men at disproportionate rates. After the Centers for Disease Control declared the unknown disease an epidemic, 80 men gathered at the New York apartment of writer Larry Kramer to discuss the "gay cancer" and raise money for research. GMHC would be founded as a tax-exempt entity, with Paul Popham as President.



GMHC initially organized a crisis hotline originating from the home telephone of executive director Rodger McFarlane. McFarlane would shoulder the responsibility of organizing the growing organization, giving it a formal structure, and procuring both funding and offices.

McFarlane is credited for establishing much of GMHC's signature programming, such as crisis counseling, legal aid, and social work. The organization evolved to provide support services for people suffering from AIDS.



In 1983, Kramer would be removed from the organization's board due to conflicts. He would go on to found ACT UP (the AIDS Coalition to Unleash Power), which focused more specifically on direct action and political influence to procure funding and raise awareness for AIDS prevention and research. Kramer was often critical or hostile to GMHC over perceived differences in values and approach. The Normal Heart is a roman a clef of his time with the organization.

GMHC would continue to grow and, in 1997 would move from its small offices in Chelsea to

the Tisch Building on 24th Street following a 12.5 million dollar renovation. It would move again in the 2000's, to a 110,000 square foot facility on 33rd Street in Manhattan and greatly expand its already wide range of health and social services support. These now include health and nutrition counseling, a food pantry, and free hot meals for clients. It currently provides services to over 100,000 New Yorkers.



## THE AUTHOR

Larry Kramer was born in Bridgeport Connecticut and was considered an "unwanted child." When his family moved to Maryland, they found themselves in a lower socioeconomic bracket than many of their neighbors. Though Kramer was sexually involved with a male friend in junior high, he dated girls in high school.

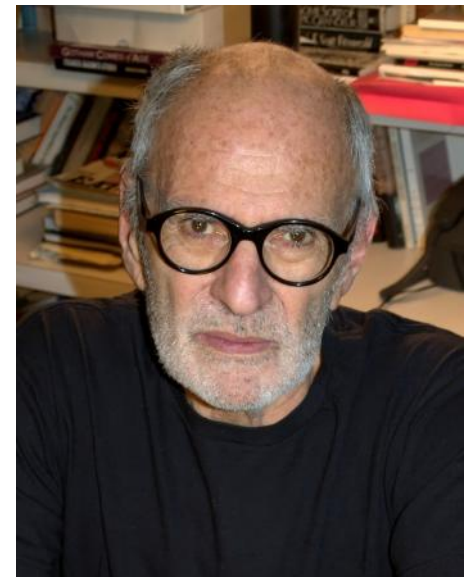
Upon arrival at Yale University in 1953, Kramer felt alienated (as if he were "the only gay student on campus) and his grades suffered, leading to an attempted suicide by aspirin overdose. After recovering, he sought to explore his own sexuality and engaged in an affair with his German professor, his first mutual romantic relationship with a man. Upon leaving Yale, he became involved in film production as a Teletype operator for Columbia Pictures. He moved on to pen several screenplays, with his 1969 adaptation of Women in Love being nominated for an Oscar.

His 1979 novel Faggots caused scandal with its descriptions of the gay lifestyle in the 1970's. The book was panned by both

gay and mainstream press. Kramer would go on to help found the organization Gay Men's Health Crisis in the 1980's. His ouster from this organization would precipitate the writing of The Normal Heart. He would also go on to help found the AIDS Coalition to Unleash Power (ACT UP) and be arrested for numerous disruptive protests aimed at raising awareness and changing public health policies.

In 2001, Kramer was in dire need of a liver transplant and was rejected due to his 1988 HIV diagnosis. This led Newsweek to announce that Kramer was dead in June of 2001, and the Associated Press put out that he had died in December of that same year. Kramer received a new liver from the University of Pittsburgh that same month.

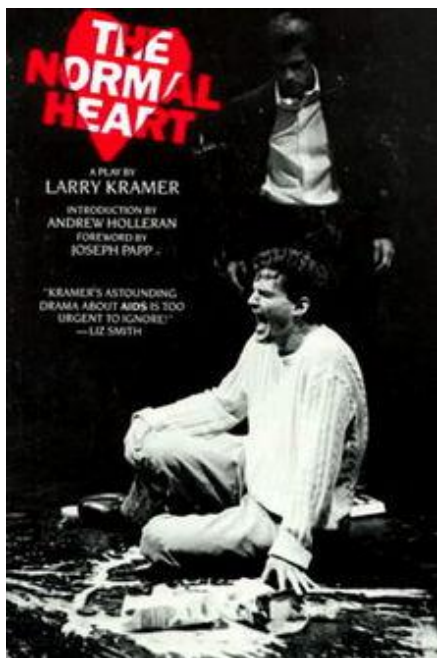
Kramer has received awards from the American Academy of Arts and Letters, and has been nominated for the Emmy, the Pulitzer Prize in Drama, and the Academy Award. He continues to write and is still active in LGBTQ rights activism.



# SYNOPSIS & PRODUCTION HISTORY

Beginning in the early 1980's, an unidentified disease is killing off a very specific group of people, homosexual men, mostly from New York City. Writer and Gay Rights activist Ned Weeks is struggling to bring together an organization dedicated to raising awareness of this disease. Dr. Emma Brookner, a physician and polio survivor, has the most experience with this disease, but bemoans the lack of medical knowledge. She encourages abstinence among gay men, citing the fact that the causes of the disease, as well as its vectors, are completely unknown. Meanwhile, Ned struggles with his brother Ben over funding for his organization while also falling in love for the first time in his life, with Felix.

As the unknown illness reaches the status of an epidemic, and the death toll continues to climb, Ned struggles with his brother's homophobia and materialistic concerns impinging on his activism. Ned severs ties with his brother and turns to the administration of New York mayor Ed Koch for funding.



Ned's organization elects as its president a man named Bruce Niles, who is known as being a "good" gay. Far more polished and deferential than Ned, tensions between the two simmer as they work together to promote the organization. Felix reveals to Ned that he is infected with the mysterious disease. Ned's confrontational and direct manner sabotages his interactions with Mayor Koch's office. Ned is then expelled from the group he helped to found.

Meanwhile, Dr. Brookner assumes the role of activist and advocate, noting the emergence of the disease in other countries and even in other countries around the world. Although she desperately asks for funding, she is denied. This sends her on a tirade against those who allow the epidemic to rage and take the lives of homosexual people already marginalized by the government.



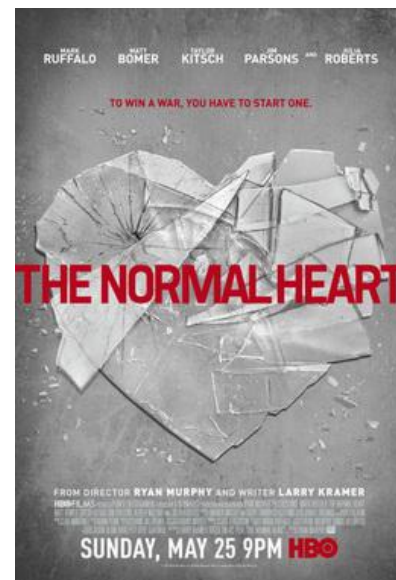
As Felix nears death, he approaches Ben to set up his will and attempt to reconcile him with his brother. Once Felix dies, Ned laments that he did not fight hard enough.

The Normal Heart is acknowledged to be a deeply autobiographical play. After many performances of the 2011 revival, Kramer circulated a flyer detailing some of the real stories behind the various characters.

The play opened Off-Broadway at The Public Theater in April of 1985 and was directed by Joseph Papp. The original run lasted for 294 performances and made use of a very simple set painted with facts and figures of the AIDS epidemic. This is the longest-running play ever staged by the Public Theater.

The play's European premiere would come in 1986 at the Royal Court Theatre, directed by David Hayman with Ned Weeks played by Martin Sheen, who received an Olivier award for the performance. It would premier in Australia at the Sydney Theatre Company in 1989.

The play would be revived as a benefit reading (organized by Barbara Streisand) in 1993 and 2004, again at The Public. The play's Broadway premier would come in 2011 at the Golden Theatre, which would be followed shortly news of the play being optioned for a film adaptation. Said film debuted on HBO in May of 2014.



In 1992, Larry Kramer wrote a sequel about the character Ned Weeks entitled The Destiny of Me. He was nominated for the Pulitzer Prize in drama for this play.

# The Company

Michael Babbitt (Mickey) holds a Master of Fine Arts with Playmaker's Repertory Company at UNC-Chapel Hill. He has previously appeared with Burning Coal in Romeo and Juliet (2000). He almost exclusively now works behind the camera as a director in film. Recently wrapped principal photography for the feature length film "The Last in Line" with Bombshell Studios ([www.bombshellstudios.com](http://www.bombshellstudios.com)) filmed in Hillsborough, NC.

Dylan Bailey (Assistant Stage Manager) Dylan is thrilled to be working with Burning Coal Theatre once again! Recently he worked with Burning Coal as an Assistant Stage Manager on The Greeks. He also worked with Burning Coal as an Administrative Intern during the Summer of 2016, was the Props Master for Kidswrite 2016, and acted in Oakwood Lives 2016: Home Again! Dylan is currently in his senior year at East Carolina University where he is double majoring in Theatre Arts Education and Theatre for Youth.


Christopher Barefoot (Assistant Stage Manager) Chris has dabbled in local theatre, but never on stage, since meeting his partner, Adam (Stage Manager) in 1999. Over the past 18 years, Adam has forced him (not really) to be involved with a number of theatre events doing anything from selling concessions to Assistant Stage Managing. Recently, his handiwork could be seen in Raleigh Little Theatre's production of Avenue Q where he was a member of the light crew.

Adam Budlong (Stage Manager) Adam has been involved with Burning Coal Theatre since 1999. He frequently finds himself stage managing, but also enjoys any of the other elements of the theater, as long as he's backstage! Most recently Adam stage managed Raleigh Little Theatre's production of Avenue Q. For Burning Coal: Darkside, Skylight, The Wiz, State of Dance, The Heretic, Man of La Mancha, St. Nicholas, To Kill A Mockingbird, The Love Song of J. Robert Oppenheimer, Inherit the Wind, 1776, Einstein's Dreams ('06/07), A New War, Accidental Death of An Anarchist, Waiting for Godot, Juno and the Paycock, Tartuffe, The Mound Builders, Company, The Weir, Uncle Tom's Cabin, Einstein's Dreams('98/99).

Preston Campbell (Felix Turner) is making his second appearance on the Burning Coal Theatre stage in this production of The Normal Heart. He has appeared in a few theatre productions throughout the Raleigh area. A few of these productions include Psycho Beach Party and Equivocation at Theatre in the Park, A Raisin in the Sun at Raleigh Little Theatre, Coriolanus with Bare Theatre, and most recently in The Royale at Burning Coal Theatre.

Mia Carson (Master Electrician) is glad to be back at her home theatre once again. Some of her other work at Burning Coal as a Master Electrician includes: The Royal (2017), Heisenberg (2017), Written on the Heart (2017), Skylight (2017), Sunday in the Park with George (2015), Romeo & Juliet (2015). She would like to thank Jerry for this opportunity and for always making her feel welcome.

Mark Filiaci (Ben Weeks) For Burning Coal Theatre: Much Ado About Nothing, Enron, Night and Day, Einstein's Dreams (1st), Pentecost (1st), Henry IV, Parts 1 & 2, The Greeks and most recently, Peter Pan and Wendy. Other regional credits include: The Devil's Dream, Hamlet for Barter Theater; A Few Good Men, A Midsummer Night's Dream for Cape Fear Regional Theater; Good People, Uncle Vanya, Cat's Paw, Orson's Shadow for Deep Dish: Dark Ride, The Monogomist, Fit to be Tied for Manbites Dog Theater; Venus In Fur for American Theatre Practice.



Marc Geller (Ned Weeks) was seen here, at Burning Coal , earlier this season as Witch Finder in Darkside and is very happy to be back. He just appeared as The Ghost of Marley (for the fifth year) in A Christmas Carol at the Hanover Theatre in MA. Marc was seen this past summer at Cape May Stage, as Ira in The Tale of the Allergist's Wife and has appeared regionally in The Pilgrim Papers at the Berkshire Theatre Festival, The Mystery of Irma Vep at Seven Angels Theatre, Disgraced at Cape May Stage, West Side Story at The Summer Theatre of New Canaan, Engaging Shaw at New Jersey Rep, Death and the Maiden at New Stage Performing Arts Center, and Trio Sonata and Gesualdo for The Women's Theatre Company. In New York, he has been seen in the Off Broadway productions of Cloud 9, Nora, The Dybbuk, Box Office Poison, Bomber Jackets, Adjoining Trances, Critical Mass, and Prince Hal and the first NYC revivals of Bent, Exit the King, and Unidentified Human Remains.


Cody Hill (Tommy Boatwright) Cody is excited to join the company of The Normal Heart! This is third show with Burning Coal. Previous Burning Coal productions include: Darkside and Peter Pan and Wendy. Other credits include: A Man for All Seasons, Spring Awakening, Oklahoma, and Grease. He'd like to thank his friends and his family for their continued love and support.

David Hudson (David/Hiram Keebler/Examining Doctor/Orderly) David trained at the Arts Educational School of London in England and has worked with many local theatre companies, highlights include: NRACT (Picasso at the Lapin Agile), Tiny Engine (Creature), Deep Dish (Life is a Dream, Journeys End, The Cherry Orchard), The Justice Theatre Project (Julius Caesar, One Flew Over the Cuckoo's Nest), Burning Coal (All the King's Men, Juno and the Paycock), Theater in the Park (To Kill a Mockingbird), and the Carrboro Arts Center (Into the Breach) among others.

E. D. Intemann (Scenery and Lighting Designer) For Burning Coal scenery and lighting designs include Heisenberg, Good, Brigadoon, Much Ado About Nothing, and Sunday in the Park with George. Lighting designs include Romeo and Juliet, The Love Song of J. Robert Oppenheimer, and Way to Heaven. Lighting design credits off-Broadway at 59E59, for Danspace at St. Marks and La MaMa in NYC, Kitchen Theatre and Cherry Arts in Ithaca, NY, Eastman School in Rochester, NY, Charlotte Repertory Theatre and Flat Rock Playhouse in NC. International designs for Confrontations Festival in Poland and GarajIstanbul in Turkey. Resident designer at Cornell University. Previously Associate Professor at the University of South Carolina.

Barry Jaked (Technical Director) Barry is in his fifth season as the Technical Director for Burning Coal Theatre, his ninth year as Technical Director for the Halle Cultural Arts Center in Apex, NC. Other recent credits include King Lear - Scenic Fabricator for Honest Pint/Sweet Tea Shakespeare, And Then There Were None - Master Carpenter for Cary Players, Steel Magnolias - Light Design for NRACT.

Byron Jennings, II (Bruce) Byron is excited to be returning to Burning Coal and performing with this fantastic cast and crew! Previous credits include Coalhouse in Justice Theatre Project's Ragtime, Christian in Burning Coal's Ruined, Lopakhin in Little Green Pig's Cherry Orchard Othello in Bare Theatre's Othello, Williamson in Deep Dish Theater's Glengarry Glen Ross and various characters in Theatre in the Park's Almost Maine. He would like to thank the supporters of local theater, without whom none of this is possible, as well as his family and friends for always supporting his passion.



Eric S. Kildow (Dramaturg/Study Guides) is an Assistant Professor of Theatre at Kent State University in Ohio and works as a freelance dramaturg & director. As an artistic associate of the London-based Loitering With Intent Theatre, he presented the devised work TurnRight/TurnLeft: A Manual for the End of the World at the Fleet Street Theatre in Hamburg, Germany. He is a member of the Stage Directors & Choreographers Society, Literary Managers & Dramaturgs of the Americas, the Lincoln Center Theatre Director's Lab and the Burning Coal Company of Artists. For Burning Coal: Man of La Mancha, Brigadoon, As You Like It, Shining City, Good, Ruined, The Heretic, (Three Man) Tempest, The Jesus Fund, The Diary of Anne Frank, Fayetteville Street, Outrunning Bullets, ASYLUM, The Wiz, Blue Sky, Spoonface Steinberg, Oakwood 2016, Skylight, Written on the Heart, Heisenberg, The Royale, Darkside, and Peter Pan & Wendy. <http://www.eskildow.com>


Riley Lange (Assistant Stage Manager) Riley is 18 a senior at Holly Springs high school. This is her first production with Burning Coal. Riley has worked in Holly Springs Theater Company in A Christmas Carol, The Sound of Music, Student Play Festival, Peter Pan, Cinderella, The Yellow Boat, A Murder Mystery, James and The Giant Peach, Greater Tuna, The Phantom of The Opera, Neverwhere, Miracle on 34th Street, and Barnum. She hopes you enjoy the show!

Kahei (Ketti) Shum McRae (Costume Design) Kahei is delighted to make her design debut at Burning Coal Theatre. She is originally from Hong Kong and graduated with a BA in Theatre and Drama from the University of Wisconsin-Madison, a BFA in Production Design and a MFA in Costume Design from the University of North Carolina School of the Arts. Some of her favorite recent credits include GRACE FOR PRESIDENT and SNOWY DAY with Children's Theatre of Charlotte, CABARET with Davidson College, LA CAGE AUX FOLLES with Theatre Charlotte as well as INTO THE WOODS and A STREETCAR NAMED DESIRE with UNC School of the Arts. Her costume design work has been seen at UNC Charlotte, The Barter Players, The Peppercorn Children's Theatre, Wake Forest University and Arts Center of Coastal Carolina. Kahei is also active in the world of filmmaking. She costume designed ALL YOU CAN CARRY, CIRCLES, CHESTER and THE STORY OF DR. HOOVES. Special thanks to UNCSA, her parents and her husband.

James Merkle (Craig Donner/Grady/Orderly) James is thrilled to be returning to the Burning Coal stage. He's been in numerous productions for The Gilbert Theater's The Diary of Anne Frank (Mr. Van Daan), The Secret Garden (Albert Lennox), and Young Frankenstein (Victor Frankenstein/Ensemble) For Burning Coal: Sunday in the Park with George (Franz/Dennis). For Cape Fear Regional Theatre: A View from the Bridge (Louis). For Sweet Tea Shakespeare: Love's Labour's Lost (Ferdinand), and The Importance of Being Earnest (Algernon Moncrieff). He's also done various film and new media works like the Don't Call It Velcro.

Areon Mobasher (Graphics Designer) is thrilled to be back at Burning Coal, not as an actor this time around, but as graphics designer. He is a musician and composer in various genres ranging from jazz, to neo-classical, to heavy metal. He has worked in music production and composition since he was thirteen, writing, performing, and recording with his own band while ghostwriting for other projects. He is in his fourth year at NCSU, pursuing a BA in Literature and a minor in Theatre. Recent acting credits include Young Andrewes in Written on the Heart (Burning Coal), Archibald Craven in The Secret Garden (NC State), and Teveye in Fiddler on the Roof (NC State). Areon would like to thank his family and friends for their unwavering love and support, and everyone at Burning Coal for this opportunity.






Elizabeth Newton (Properties Designer) Elizabeth is excited to continue her sixth season as the unofficial Resident Props Designer and frequent Scenic Designer of Burning Coal. She is also a proud member of the Burning Coal Theatre Company of Artists. Elizabeth holds a BA in Theatre from Meredith College and an MFA in Scenic Design from the University of Southern Mississippi. While currently based in Raleigh, Elizabeth has worked as a designer and scenic artist in North Carolina, Virginia, Oklahoma, Mississippi, and New York. Favorite Scenic Designs for Burning Coal: Peter Pan and Wendy, Skylight, Blue Sky, and The Diary of Anne Frank. Favorite Props Design for Burning Coal: Written on the Heart, Skylight, Sunday in the Park with George, Romeo and Juliet, Iron Curtain Trilogy, The Heretic, Good, and Brigadoon. Elizabeth also enjoys designing for Bare Theatre, NRACT, Raleigh Little Theatre, Tidewater Stage, and Regent University.

Donovan O'Daniel (Assistant Director) Donovan is a sophomore at Hollins University. Although she attends school in Virginia, she is excited to return to her home in North Carolina and get involved in theatre here. This is her first production with Burning Coal Theatre and she relishes the opportunity to make theatre with them!

Julie Oliver (Dr. Emma Brookner) For Burning Coal Theatre: Peter Pan and Wendy, The Iron Curtain Trilogy (also The Cockpit Theatre, London), The Heretic, Good, Brigadoon, Enron, Hair, Much Ado About Nothing. Also Maccountant, (Little Green Pig Theatrical Concern); Mr. Burns (Manbites Dog Theater), Oh What A Lovely War, Eurydice, 10 by 10 in the Triangle, 2009, 10 and 15 (ArtsCenter Stage); Seascape (South Stream Productions); The Cripple of Inishmaan, Superior Donuts (Deep Dish Theatre) Julie is a member of Burning Coal's artistic company.

David Ranii (Sound Design) David made his professional debut as a sound designer last year when he created the aural backdrop for Burning Coal's production of Heisenberg. In case you were wondering, David is very proud to be related to the director of The Normal Heart.

Emily Ranii (Director) Emily is a Boston-based director of theatre, musical theatre, and opera. She is Assistant Professor of Performing Arts at Wheelock College, Academic Program Head of Boston University Summer Theatre Institute, and Lecturer for Boston University's Opera Institute. A Burning Coal company member since 2002, she has directed Heisenberg, Romeo and Juliet, Brigadoon, Much Ado About Nothing, and The Love Song of J. Robert Oppenheimer for Burning Coal; Mrs. Packard for Bridge Repertory Theatre, Playhouse Creatures Theatre ; Tongue of a Bird for New Repertory Theatre; 9 Parts of Desire for Playmakers Repertory Company; Sweets By Kate, The Cradle Will Rock, and Hydrogen Jukebox for Boston University; as well as Blood Wedding (co-director with E.D. Intemann) and The Body Project for Cornell University. Emily holds an MFA in Directing from Boston University.



Meredith Riggan (Scenic Artist) Meredith is a North Carolina based Artist and is excited to be returning to Burning Coal Theatre for the production of The Normal Heart. She has previously painted for Burning Coal in the productions of Peter Pan and Wendy, Darkside, The Royale, Heisenberg, Written on the Heart, Skylight, SPOONFACE STEINBERG, The Wiz, and Good. After receiving her Bachelor's Degree in Scenic Art from the University of North Carolina School of the Arts, Meredith has worked as the Scenic Charge Artist at several theatres around North Carolina including Sweet Tea Shakespeare, Half Pint Theatre, Triad Stage, The Upstage Cabaret, City Arts-Greensboro Children's Theatre, The Winston Salem Theatre Alliance, ECU Loessin Playhouse, and a painter for Spartanburg Ballet through UNCSA paint shop, along with several freelance jobs such as; repairing sculptures for the Greensboro Children's Library, and painting custom pet portraits and works of art through her company Riggan Originals.

Cole Train (Paint Assistant) Cole Train has been a shop dog and paint assistant since he was 7 weeks old. He has traveled and worked with his Mom at several theatre's and will occasionally fetch a paintbrush. He mainly loves supervising the painting of sets and always leaves one signature paw print on each set. He is a 10/10 good boy.

Carry Vaughan (Assistant Stage Manager/House Manager). Carry is a graduate from Appalachian State with a BS in Theatre Education and a BA in Creative Writing. Her most recent credits have been Peter Pan & Wendy (Burning Coal, ASM), Dark Vanilla Jungle (Burning Coal, Stage Manager, London Camden Fringe Festival), Outside Mullingar (Deep Dish Theatre, PSM), Journey's End (Deep Dish, PSM), and The Iron Curtain Trilogy (Burning Coal, Assistant Stage Manager and Assistant Director, Raleigh and London tours). She is Burning Coal's House Manager and Front of House Volunteer Coordinator.

Damion Younts (Assistant Stage Manager) Damion is a sophomore at Holly Springs High and has worked as a stage manager for 4 years and is happy to continue with Burning Coal Theatre! He hopes to continue as a stage manager in the future and keep improving!



## REFERENCES

- Gilman, Sander. (October 1987) AIDS: Cultural Analysis/Cultural Activism. (43) (Winter, 1987), pp. 87-107
- Graham, Jeff (January–February 2006). "25 years of AIDS and HIV: A look back — 1981–1986: In the Beginning.." *The Body*.
- Joint United Nations Programme on HIV/AIDS (UNAIDS) (2011). Global HIV/AIDS Response, Epidemic update and health sector progress towards universal access.
- Mandell, Gerald L.; Bennett, John E.; Dolin, Raphael, eds. (2010). Mandell, Douglas, and Bennett's Principles and Practice of Infectious Diseases (7th ed.). Philadelphia, PA: Churchill Livingstone/Elsevier.
- Roberts, Sam (July 6, 2005). "City Groups Get Bloomberg Gift of \$20 Million". *New York Times*
- Specter, Michael (May 2002). "Public Nuisance, Larry Kramer the man who warned America about AIDS, can't stop fighting hard and loudly." *The New Yorker*.
- Weiss RA (May 1993). "How does HIV cause AIDS?". *Science*. 260 (5112): 1273–9.

## NC STATE EDUCATION STANDARDS

The state of North Carolina values the skills and competencies of Arts education due to their applicability to other disciplines. These productions are designed to give your students exposure to the competencies and specific standards listed below.

This production and the related study materials will provide students with specific knowledge and skills to address the following Standard Course of Study Competencies and Objectives in the Theatre Arts.

- **COMPETENCY GOAL 1:** The learner will write based on personal experience and heritage, imagination, literature, and history.
  - Grades 3-5
    - 1.02: Recognize the beginning, middle, and end of a story
    - 1.03: Infer lessons from multicultural stories, fairy tales, tall tales, legends, and myths.
    - 1.06: Refine reading comprehension by using verbal and non-verbal communication.
  - Grades 6-8
    - 1.01: Recognize and explain unique characteristics of the dramatic script such as dramatic structure and dialogue.
    - 1.04: Produce written, verbal, and visual responses to written and/or performed dramatic material.
    - 1.05: Identify themes and plots from multicultural literature.
  - Grades 9-12
    - 1.03: Compare and contrast play structure in relation to other forms of literature.
- **COMPETENCY GOAL 7:** The learner will analyze, critique, and construct meaning from informal and formal theatre, film, television, and electronic media productions.
  - Grades 3-5
    - 7.01: Build skills to critique self and others in a respectful and constructive manner.
    - 7.03: Convey personal reactions to various texts.
    - 7.05: Communicate emotions and thoughts evoked by performance.
    - 7.07: Suggest alternative characters, settings, or events after viewing or participating in a performance.
  - Grades 6-8
    - 7.01: Recognize and practice audience etiquette.
    - 7.03: Develop verbal, visual and written responses to works of informal and formal theatre, film, television, and electronic media productions from various cultures.
    - 7.04: Express meaning perceived from informal and formal theatre, film, television, and electronic media productions.
  - Grades 9-12
    - 7.02: Develop and relate a world view of theatre in society.
- **COMPETENCY GOAL 8:** The learner will understand context by analyzing the role of theatre, film, television, and electronic media in the past and present.
  - Grades 3-5
    - 8.04: Experience live or recorded performance
    - 8.05: Discuss the similarities and differences between live and recorded theatrical events.

The Normal Heart is also designed to address the following Core Curriculum Anchor Standards in Language Arts Literacy and Social Studies.

- **Reading Anchor 4:** Interpret words and phrases as they are used in a text, including determining technical, connotative, and figurative meanings, and analyze how specific word choices shape meaning or tone.
- **Reading Anchor 6:** Assess how point of view or purpose shapes the content and style of a text.
- **Writing Anchor 2:** Write informative/explanatory texts to examine and convey complex ideas and information clearly and accurately through the effective selection, organization, and analysis of content.
- **Writing Anchor 7:** Conduct short as well as more sustained research projects based on focused questions, demonstrating understanding of the subject under investigation.